



**ASHINGTON**  
Academy

---

**Parent / Carer**  
**Key Stage 3**  
**Careers Information Pack**

## Vision statement

Our students are ambitious with their career choices and have a clear understanding of how their time in school directly affects their career after.

## Vision rationale

Providing students with outstanding careers guidance is of the utmost importance. It is the key to opening our students' eyes to the possibilities and opportunities available to them once they leave school. It is our job to raise their social mobility, show them what is out there and guide them towards making good, appropriate education and careers choices that will enable them to have a rewarding career. It is our vision for careers guidance at Ashington Academy is that all students have access to appropriate and bespoke careers guidance at every stage of their academic career that enables them to successfully access the next stage of their career.

We deliver Careers Education in a variety of ways to all pupils from Year 7 to Year 13 and beyond to ensure that our young people are making informed and well supported decisions. Our Tutorial and Personal Development programme encourages our pupils to think about career planning from their earliest time in school and develop positive approach in everything they do.

We are actively involved in a range of projects to enable our young people to understand the breadth of opportunities available to them in their future education and employment, and partner with several organisations that support us in this aspiration.

## Core careers offer and student entitlement

All students at Ashington Academy have access to a fully-embedded and age-appropriate careers programme which includes CEIAG ( Careers education, information , advice and guidance and work-related learning. This programme is strategically designed to ensure that our learners' needs are met throughout their journey with us.

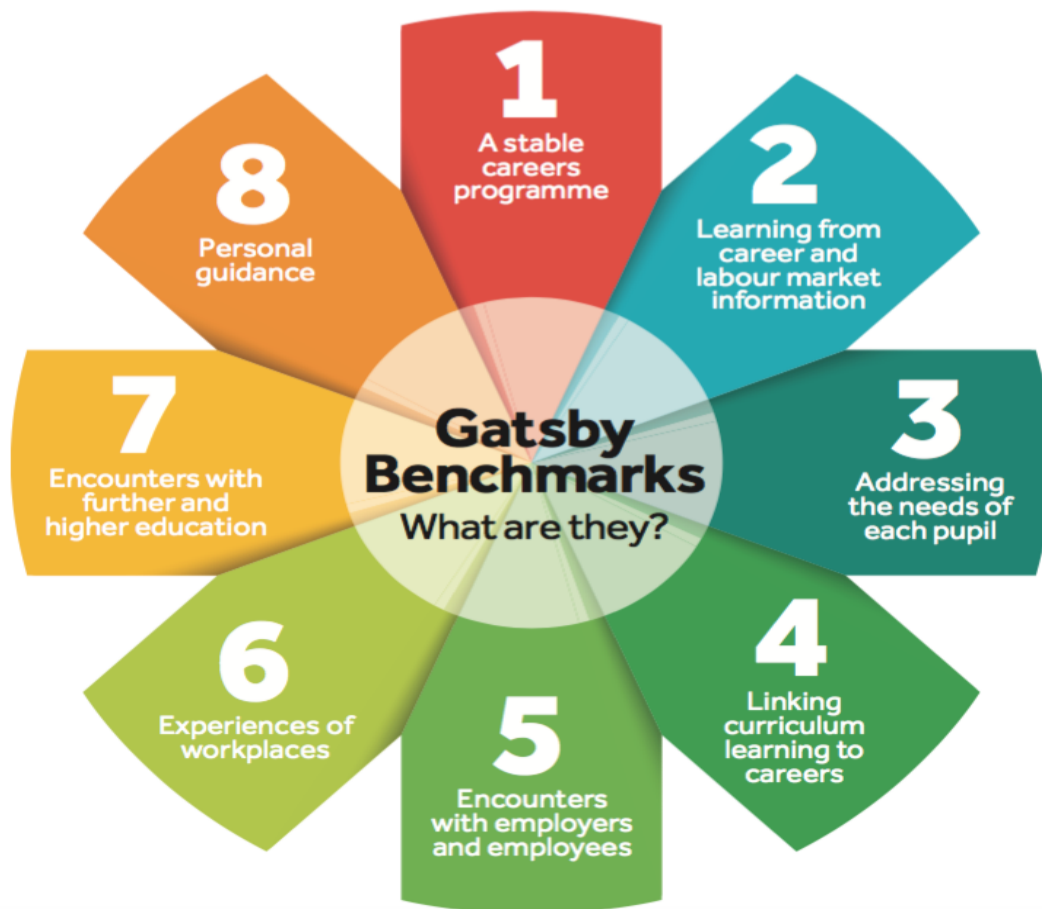
Our core offer to students includes the following:

- One-to-one careers guidance sessions with a qualified adviser. All students have at least one appointment by the age of 16; however, our most vulnerable learners are allocated multiple, and these are opened to our younger learners in the run up to options choices. We also work with the local county council to offer additional careers advice as needed.
- Advice and support are strategically tailored to ensure that the needs of all individuals are met.
- Curriculum learning is linked to the world of work.
- Students are encouraged to engage with local market information via Unifrog, registration activities and subject lessons.
- Parental support, guidance, and communication.
- Dedicated careers and skills lessons delivered via form tutors.

- Regular access to up-to-date careers information via lessons, online resources and Unifrog.
- Further education visits, assemblies and events (including training and apprenticeship providers).
- Employer encounters, including STEM employers/training providers, including activities to challenge stereotypical thinking about the world of work.
- Experience of the workplace via work experience in years 10 and 12.

## Gatsby Benchmarks

- The Gatsby Benchmarks are a set of eight objectives, which form a framework that the school uses to design and improve our CEIAG provision. We take each one in turn and provide students with a range of experiences, lessons and information that ensure they receive high quality CEIAG



KS3 Specific:

Year Group	Events
<p>7 What is a Career?</p>	<p>Northumberland College Assembly</p> <p>STEM Assembly – Careers in Maths</p> <p>PSHE sessions such as What is a career and Skills for careers with form tutors.</p> <p>NHS Melissa Bus (NHS Careers)</p> <p>Careers Fair</p> <p>Weekly careers session in registration with form tutor</p> <p>STEM assembly – British science week</p> <p>STEM assembly- Technology</p> <p>LMI ( Labour market information ) published once a month in form time</p>
<p>8 What Career is for Me?</p>	<p>Northumberland College Assembly</p> <p>PSHE sessions such as Roles within the Armed forces, Roles within the NHS</p> <p>STEM Assembly – Careers in Maths</p> <p>Northumberland College Taster Day</p> <p>NHS Careers Performance</p> <p>Carers Fair</p> <p>Weekly careers session in registration with form tutor</p> <p>STEM assembly – British science week</p> <p>STEM assembly- Technology</p> <p>LMI ( Labour market information ) published once a month in form time</p>
<p>9 GCSE Choices</p>	<p>Northumberland College – Options post 16</p> <p>Newcastle College- Options Post 16</p>

	<p>PSHE Sessions such as Preparing for Options Choices, STEM: Green jobs in the NE, What is your dream job? Delivered by Form Tutors.</p> <p>GCSE Options Assembly led by Deputy Headteacher</p> <p>GCSE Options assembly led by Subject leaders</p> <p>GCSE options parents evenings</p> <p>Northumberland College – Various taster days for different subjects, such as land &amp; animal, construction.</p> <p>Careers Fair</p> <p>Weekly careers session in registration</p> <p>STEM assembly – British science week</p> <p>STEM assembly- Technology</p> <p>LMI (Labour market information) published once a month in form time</p>
--	------------------------------------------------------------------------------------------------------------------------------------------------------------------------------------------------------------------------------------------------------------------------------------------------------------------------------------------------------------------------------------------------------------------------------------------------------------------------------------------------------------------------------------------------------------------------------------------------------------------------------------------

## Where to find further information

- Further information and advice can be found on the schools CEIAG page: [Careers education, information, advice and guidance | Ashington Academy](#)
- At every parents evening we have a dedicated College Stands where parents, carers and students can access careers information and ask questions.
- Our careers team will be happy to discuss any queries you may have, or provide further advice and guidance.
- 
- As a school we use Unifrog for all students, which is a dedicated careers platform. Students have been provided with log in details. If you have not received your login information, please contact the school and provide your email address.
- Year 9 students will be invited to attend Options Evening, a dedicated parents evening to explore their GCSE choices.
- Local Labour Market information can be found on our schools CEIAG page, the link is above.